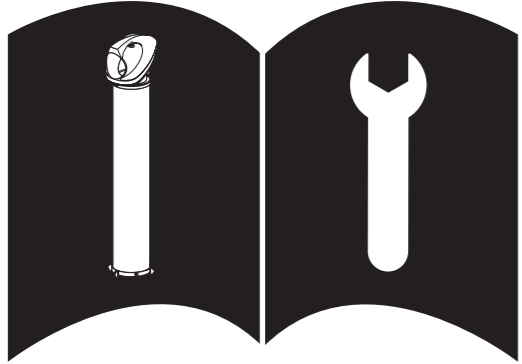


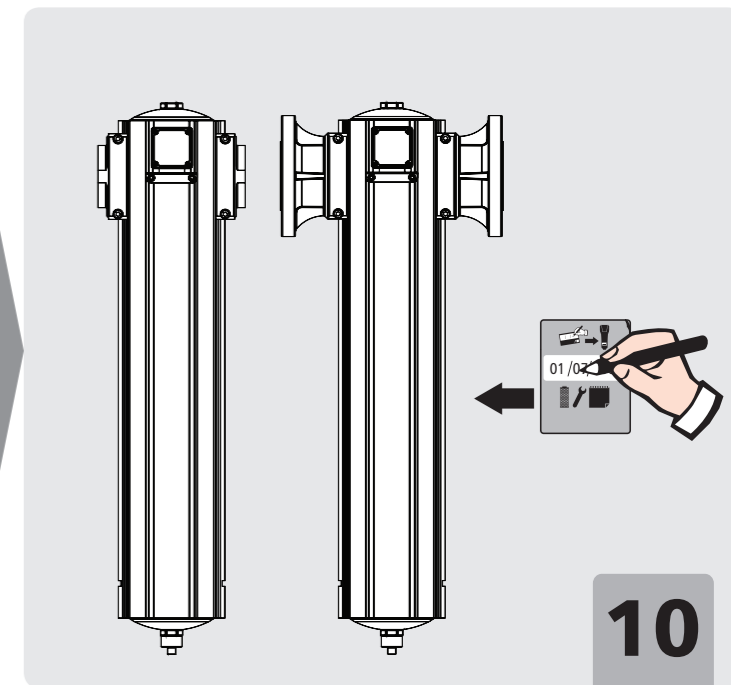
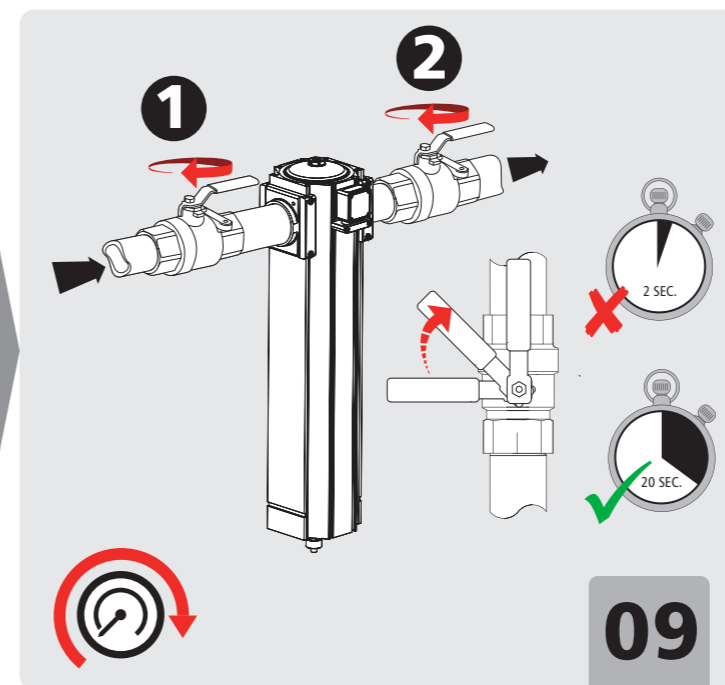
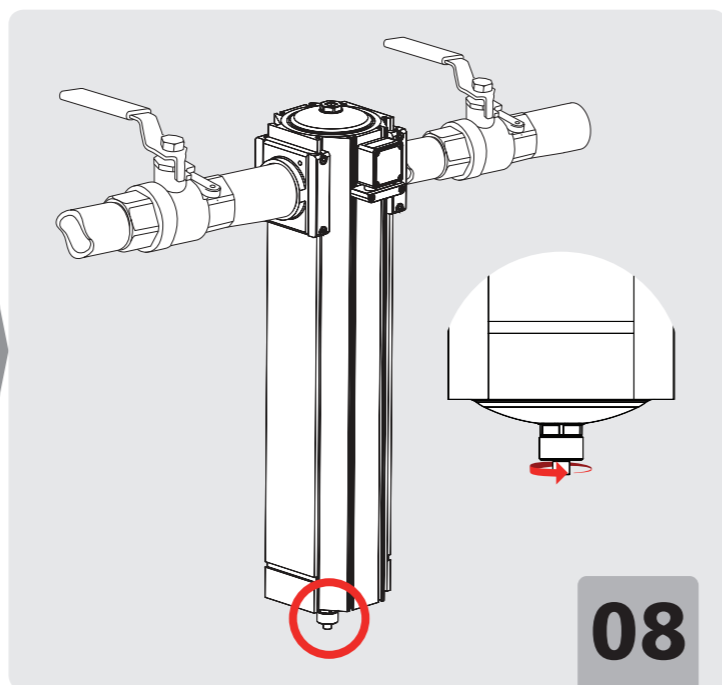
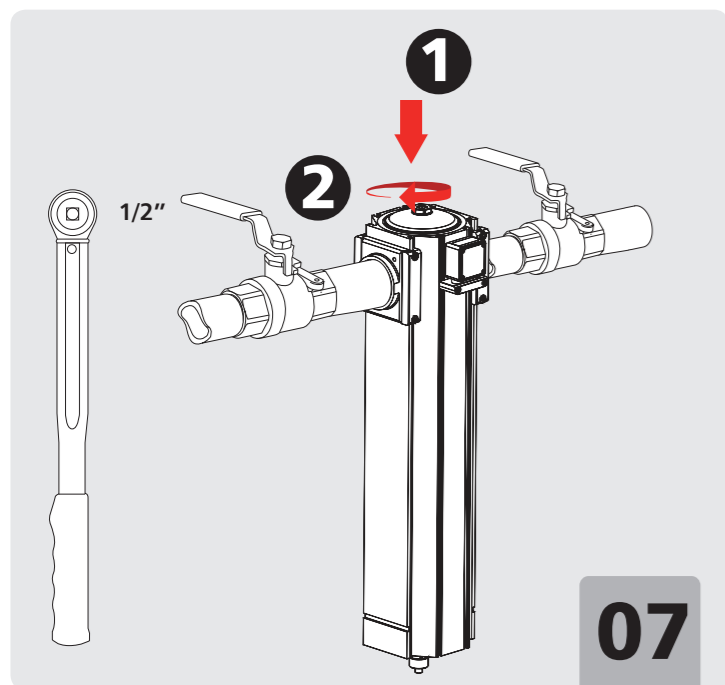
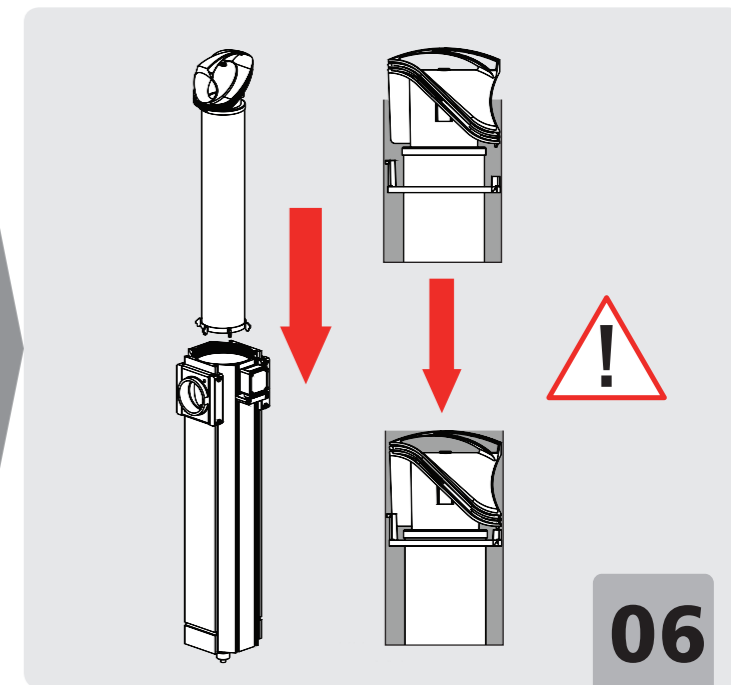
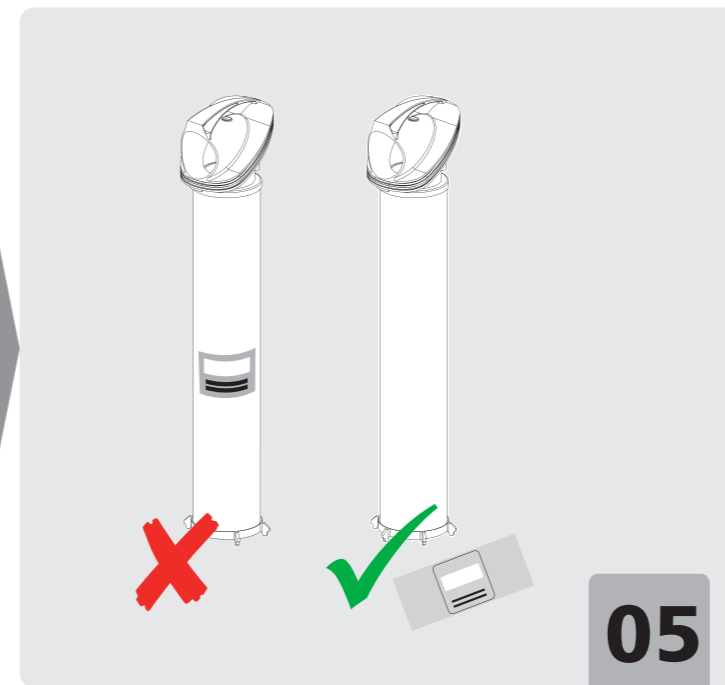
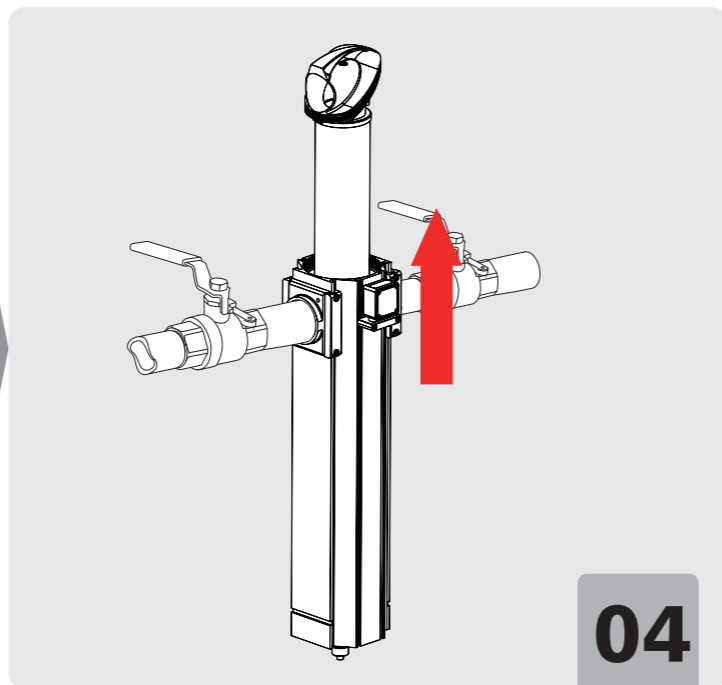
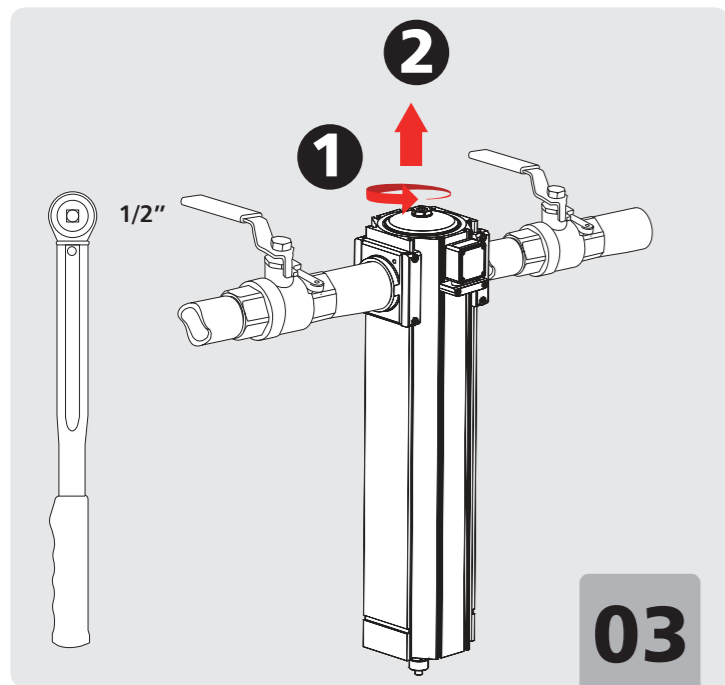
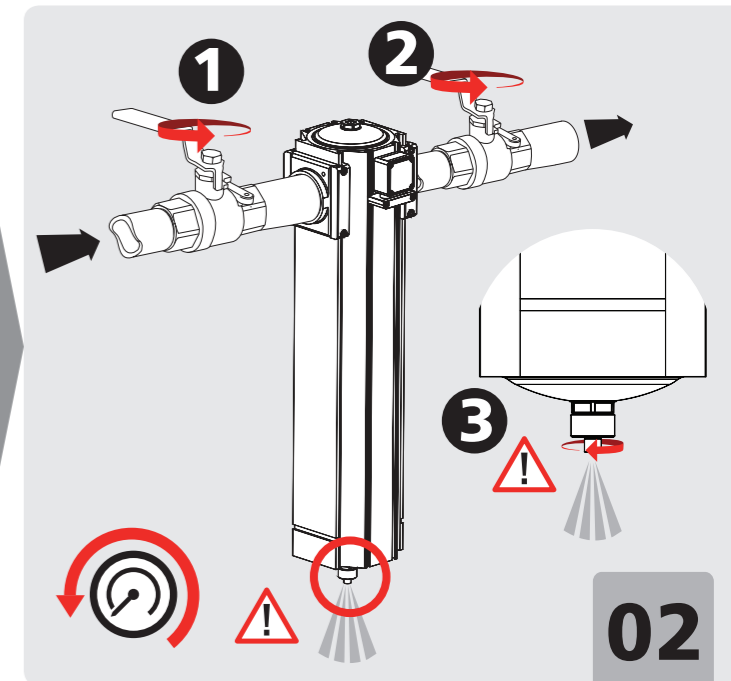
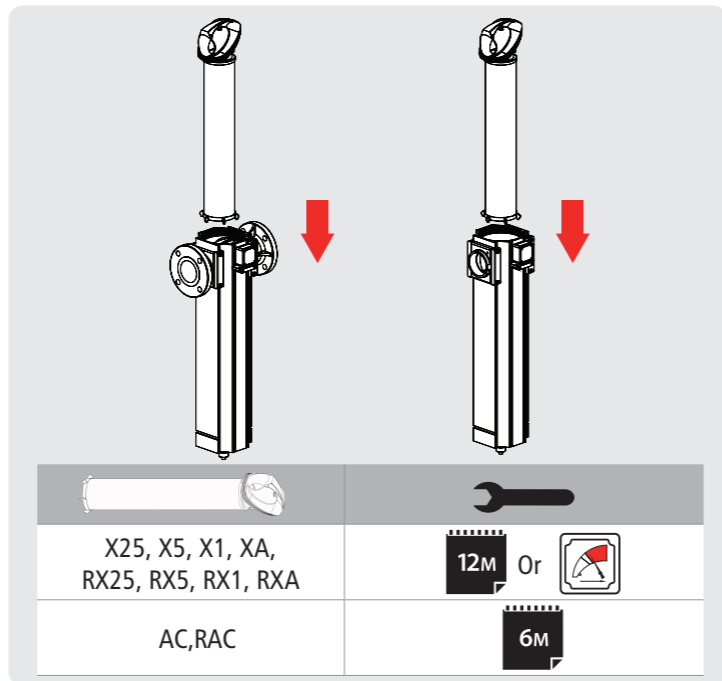
WALKER
FILTRATION

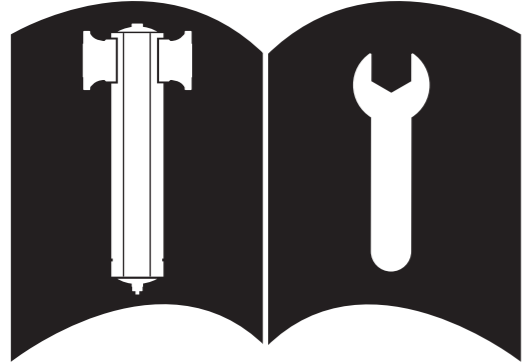
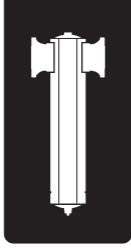
The ultimate filtration & drying technology



04 1319 001 01 Rd

www.walkerfiltration.com



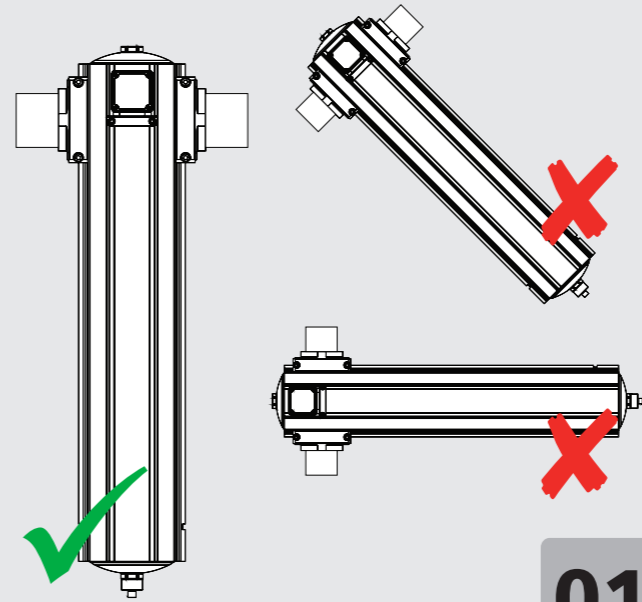


04 1319 001 01 Rd

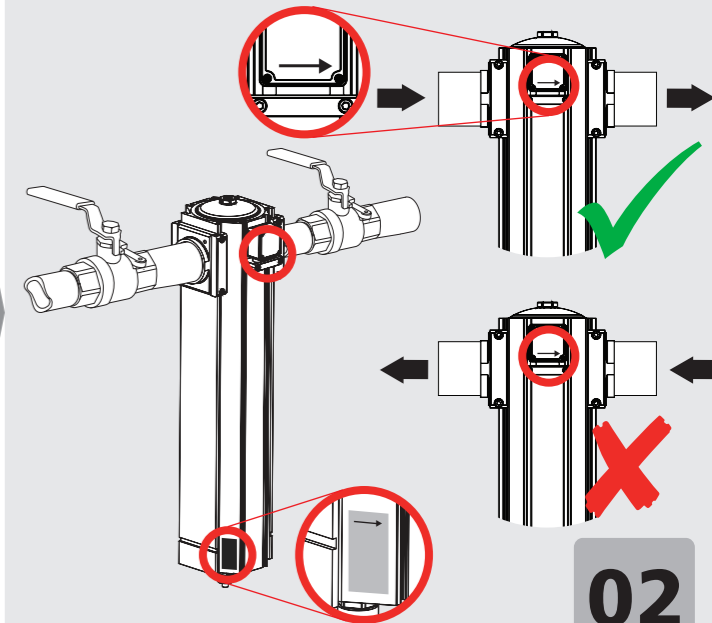
www.walkerfiltration.com



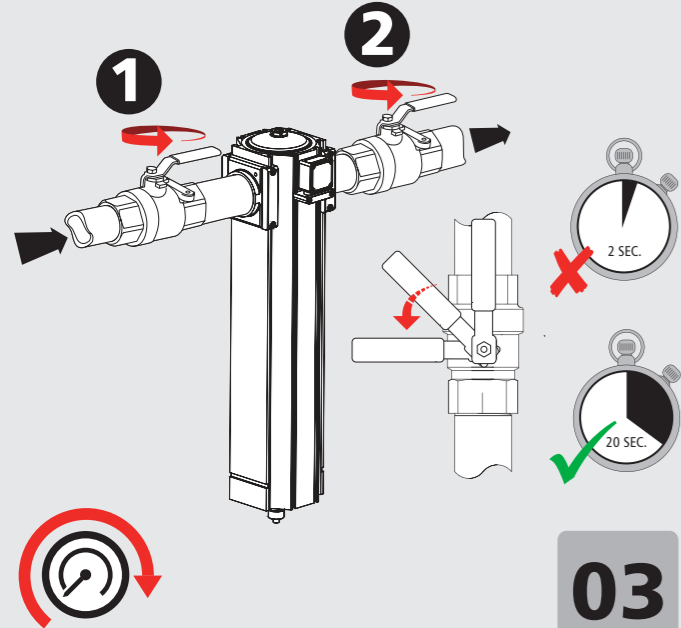
0 BARG
(0 PSIG)



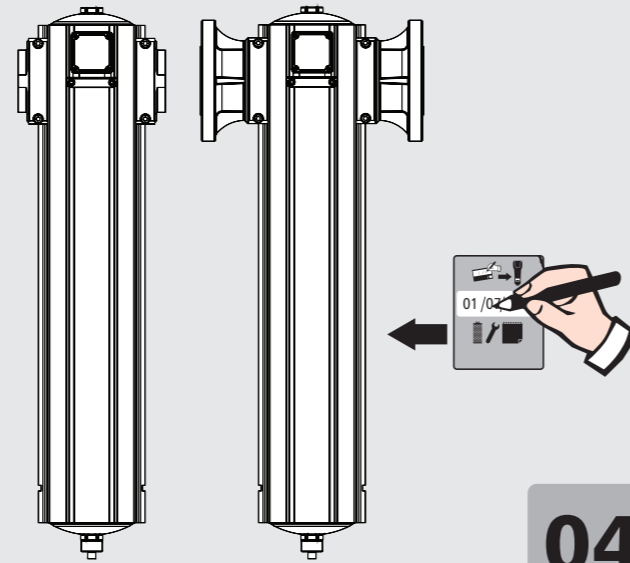
01



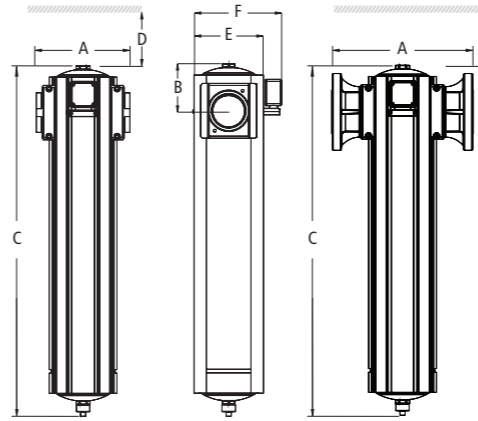
02



03



04



ADVS16 / ADVSE16
ADVS16C / ADVSE16C
Automatic Drain

SDV25 / SDVE25
Semi Automatic Drain

Max. 80°C (176°F)
Min. 1°C (32°F)

Max. 16 BARG.
(232 PSIG.)

MDV25 / MDVE25
Manual Drain

Max. 120°C (248°F)
Min. 1°C (32°F)

Max. 20.7 BARG.
(300 PSIG.)

Activated Carbon (AC) grade

Max. 50°C (122°F)
Recommended. 25°C (77°F)

Max. 20.7 BARG.
(300 PSIG.)

Operating pressure barg (psig)	0.3 (4)	0.6 (9)	1 (14.5)	2 (29)	3 (44)	4 (58)	5 (72)	6 (87)	7 (100)	8 (115)	10 (145)	12 (174)	14 (203)	16 (232)
7 barg - correction factor	0.21	0.29	0.38	0.53	0.65	0.76	0.84	0.92	1	1.07	1.19	1.31	1.41	1.51

EN Installation, maintenance and authorised disposal to be carried out by competent personnel only, in accordance with operating instructions, relevant standards, regulations and legal requirements. **DE** Installation, Wartung und Vernichtung dürfen nur von autorisiertem Fachpersonal und in Übereinstimmung mit der Bedienungsanleitung, den einschlägigen Normen, Vorschriften und gesetzlichen Bestimmungen durchgeführt werden. **FR** L'installation, la maintenance et l'élimination doivent uniquement être effectuées par des personnes qualifiées et autorisées, conformément aux instructions opérationnelles, aux normes pertinentes, aux exigences réglementaires et légales. **NL** Installatie, onderhoud en afvoer mag alleen uitgevoerd worden door vakbekwaam en bevoegd personeel, conform de bedieningsinstructies, relevante normen, voorschriften en wettelijke vereisten. **ES** La instalación, el mantenimiento y la eliminación deberán llevarlos a cabo personal competente y autorizado únicamente, de acuerdo con las instrucciones de funcionamiento y con las normativas, reglamentos y requisitos legales aplicables. **IT** Delle procedure di installazione, manutenzione e smaltimento deve occuparsi esclusivamente personale competente e autorizzato, nel rispetto delle istruzioni operative, delle norme pertinenti, dei regolamenti e dei requisiti vigenti. **PT** A instalação, a manutenção e a eliminação devem apenas executar-se por pessoal autorizado e competente, em conformidade com as instruções de funcionamento, com as normas e regulamentos relevantes e com os requisitos legais. **EL** Η εγκατάσταση, η συντήρηση και η απόρριψη πρέπει να εκτελείται μόνο από αρμόδιο και εξουσιοδοτημένο προσωπικό, σύμφωνα με τις οδηγίες χρήσης, τα σχετικά πρότυπα, τους συναφείς κανονισμούς και τις νόμιμες απαιτήσεις. **SV** Installation, underhåll och bortskaffande får endast utföras av behörig och auktoriserad personal och ska ske i enlighet med alla drifts- och underhållsinstruktioner, tillämpliga standarder, förfordningar och andra juridiska krav. **NOR** Installasjon, vedlikehold og avhending skal kun utføres av kompetent og autorisert personell i henhold til driftsinstruksjoner, relevante standarder, regelverk og lovmessige krav. **DA** Installation, vedligeholdelse og bortskaffelse må kun udføres af kompetent og autoriseret personale i henhold til betjeningsvejledningen, relevante standarder, bestemmelser og lovmæssige krav. **FI** Asennuksen, huollon ja käytöstä poiston saa suorittaa vain pätevä ja valtuutettu henkilöstö. Näiden toimenpiteiden aikana on noudatettava käyttöohjeita sekä asiaan liittyviä standardeja, määräyksiä ja lakeja. **IS** Uppsetning, viðhald og förgun á eingöngu að vera í höndum starfsfólks sem er hæft og viðurkennt á sínu sviði og á að framkvæma í samræmi við notkunarléiðbeiningar, viðeigandi staðla, reglugerðir og lög. **PL** Instalacja, konserwacja oraz użyczenie może wykonywać wykwalifikowany i uprawniony personel zgodnie z instrukcją użycia, właściwymi przepisami i wymogami prawnymi. **HU** A telepítést, a karbantartást és az ártalmatlanítást kizárólag szakképzett, erre engedélyvel rendelkező személyzet végezheti az üzemeltetési utasításokkal, a vonatkozó szabványokkal, szabályokkal és törvényi előírásokkal összhangban. **RO** Instalarea, întreținerea și debarasarea vor fi efectuate numai de personal competent și autorizat, în concordanță cu instrucțiunile de utilizare, standardele relevante, regulamentele și cerințele legale. **CZ** Instalaci, údržbu a likvidaci směji provádět pouze kompetentní a autorizovaní pracovníci, v souladu s návodem k použití, příslušnými standardy, pravidly a právními požadavky. **PT-BR** Instalação, manutenção e destruição só podem ser efetuados por indivíduos e autorizados de acordo com instruções operacionais, padrões, regulamentos e exigências jurídicas. **JPN** 設置、メンテナンス、および、廃棄については、作業指示書や関連する基準、規則、法規に則り、有資格者が行うように。

Filter model	Connection type	Connection size inches	Inlet flow rate*		Dimensions mm						Weight Kg	No. of elements	Recommended element model
			Nm ³ /hr	SCFM	A	B	C	D	E	F			
XF241	Screw	2"	1189	700	232	116	650	550	171	217	12.8	1	E1142
XF251	Screw	2 1/2"	1444	850	232	116	650	550	171	217	12.8	1	E1142
XF341	Screw	3"	1529	900	232	116	650	550	171	217	12.8	1	E1142
XF361	Screw	3"	2124	1250	232	116	870	750	171	217	16.5	1	E1162
XF371	Screw	3"	2549	1500	232	116	1027	950	171	217	19.0	1	E1172
XF341F	Flange	DN80 / 3" Flange	1529	900	352	116	650	550	171	217	16.7	1	E1142
XF361F	Flange	DN80 / 3" Flange	2124	1250	352	116	870	750	171	217	20.4	1	E1162
XF371F	Flange	DN80 / 3" Flange	2459	1500	352	116	1027	950	171	217	22.9	1	E1172

EC Declaration of Conformity (2014/68/EU)

Product Description: Aluminium Filter Housings

PED Category / Conformity Assessment Route			
Filter Model	CAT SEP	CAT I / Module A	CAT II / Module D1 COV0310124/1
XF241		✓	
XF251		✓	
XF341		✓	
XF361			✓
XF371			✓
XF341F	✓		
XF361F			✓
XF371F			✓

Assessment based on Group 2 Gas service

Standards Used: ASME VIII Division 1 - Rules for Construction of Pressure Vessels

EC Declaration of Conformity (2014/68/EU)

This declaration of conformity is issued under the sole responsibility of the manufacturer. I declare on behalf of Walker Filtration Ltd (the manufacturer) and as authorised representative, that the stated products fulfil the requirements of the new approach directives.

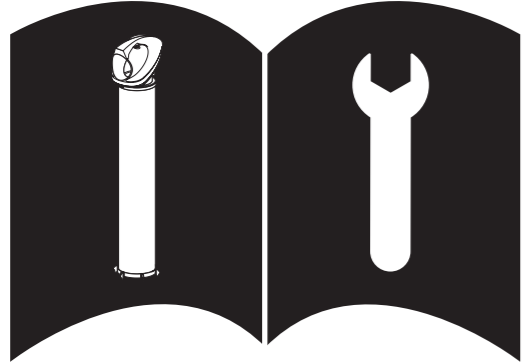
Name: Simon Wise
Position: Chief Technical Officer (CTO)
Signed: Date: January 2017

Manufactured in the UK by Walker Filtration
www.walkerfiltration.com

Notified body (Not applicable to SEP or CAT I Products)

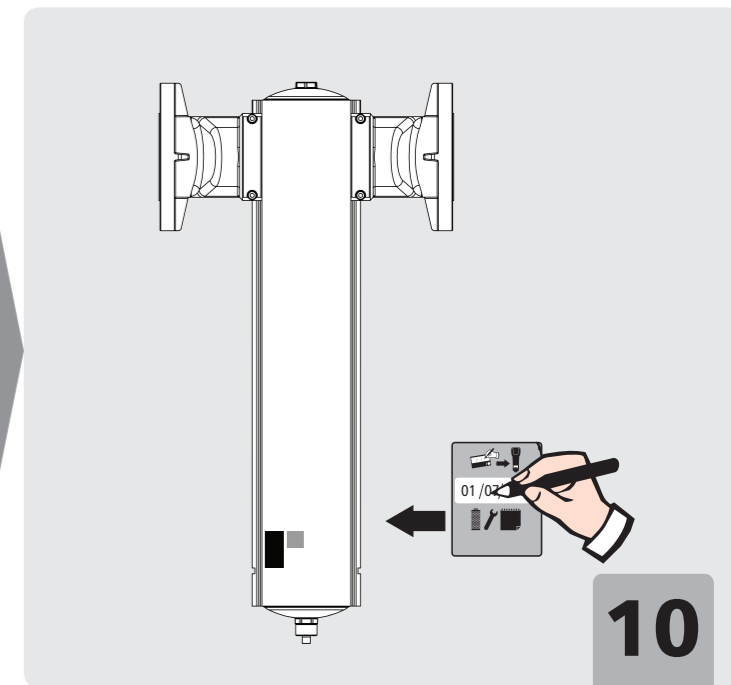
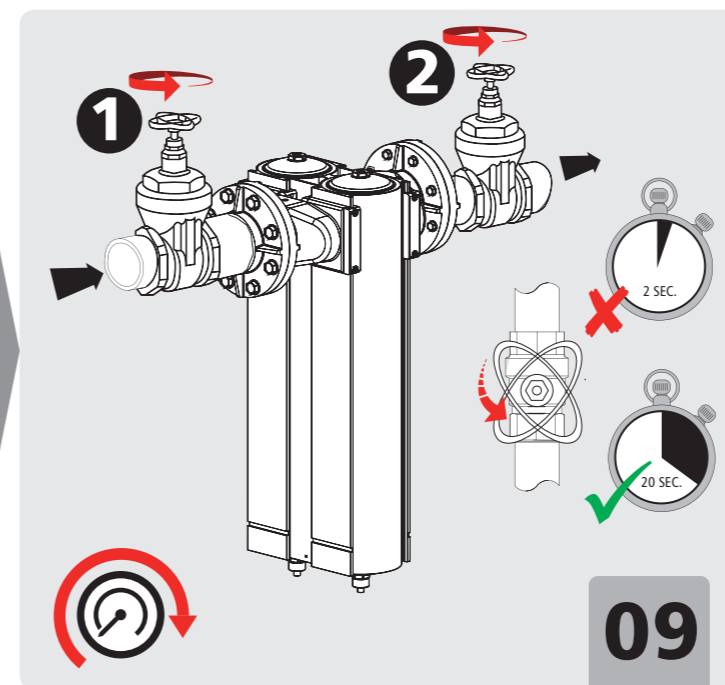
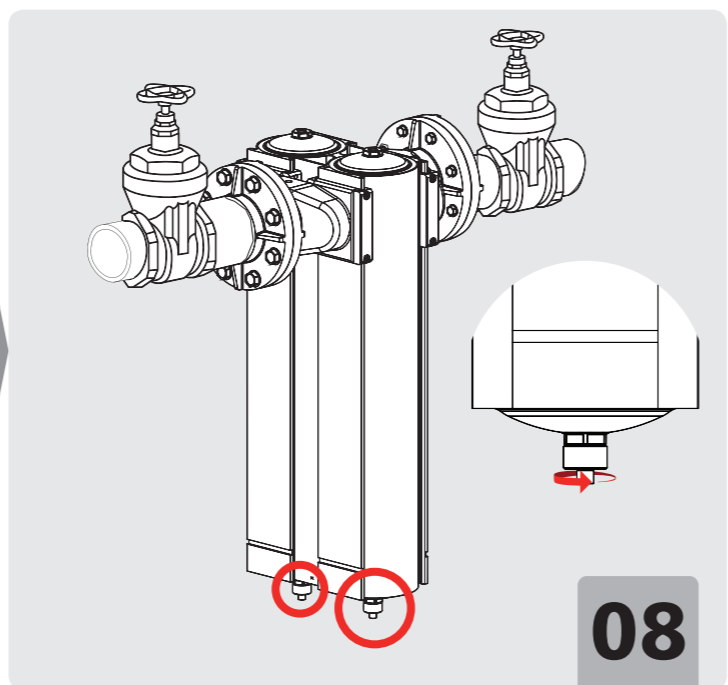
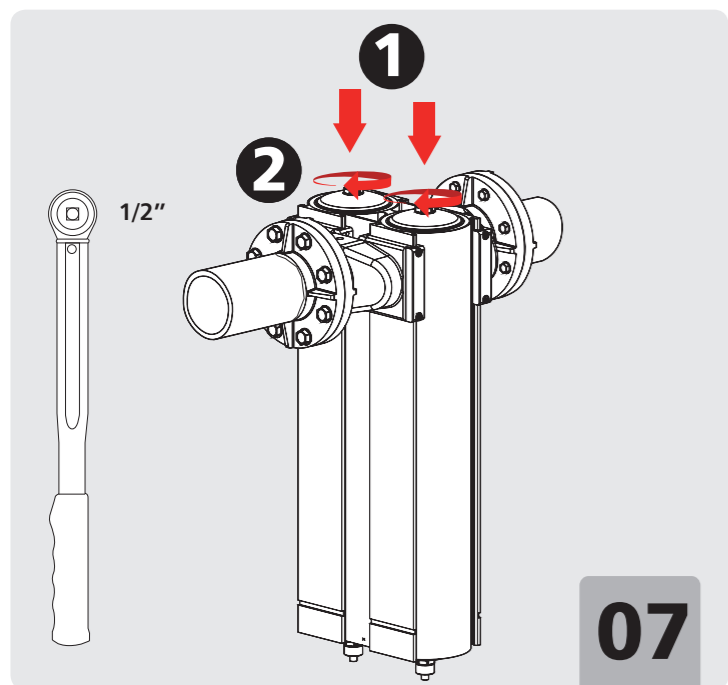
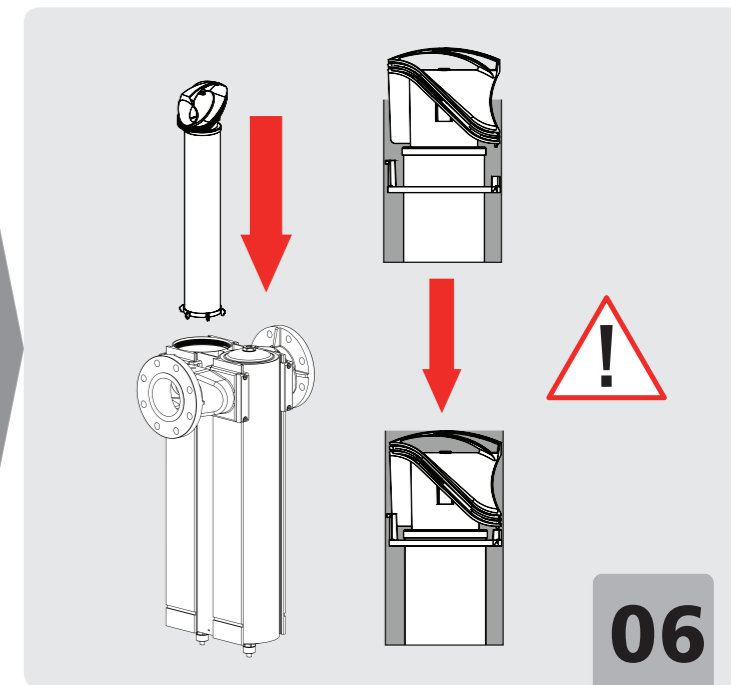
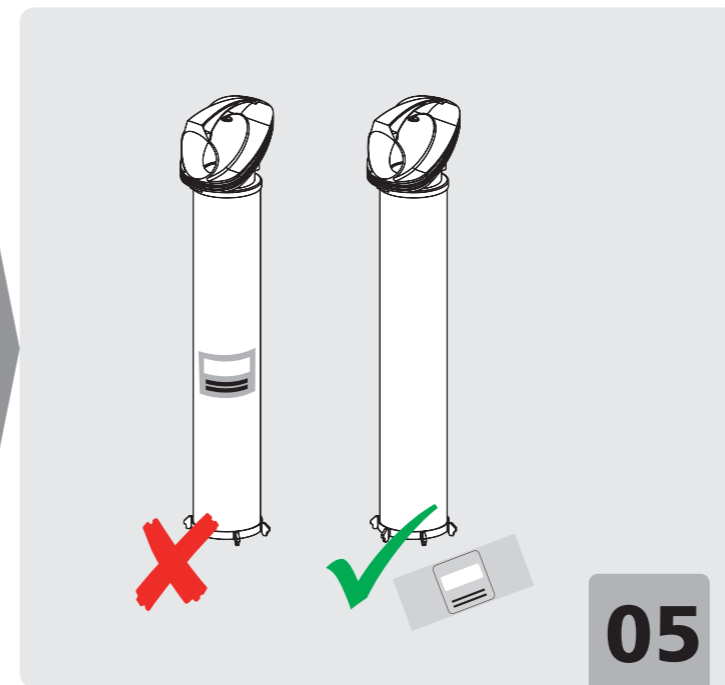
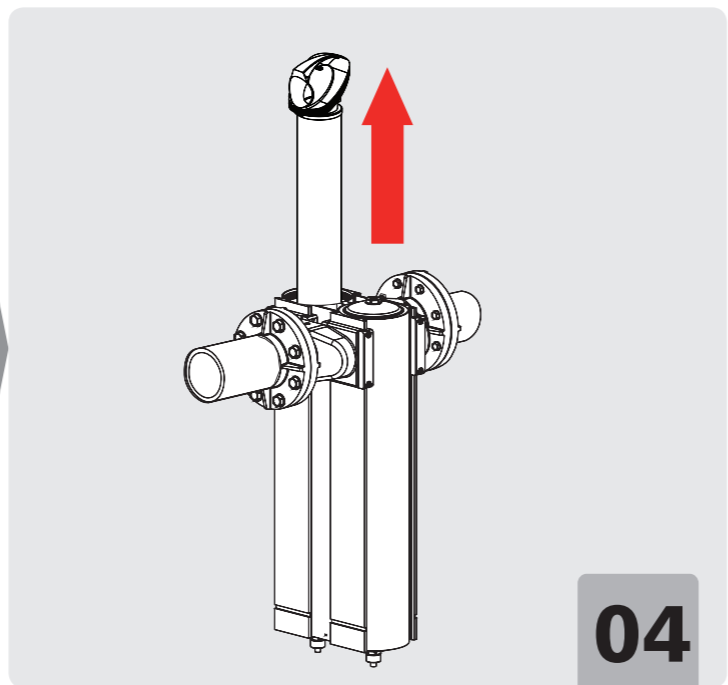
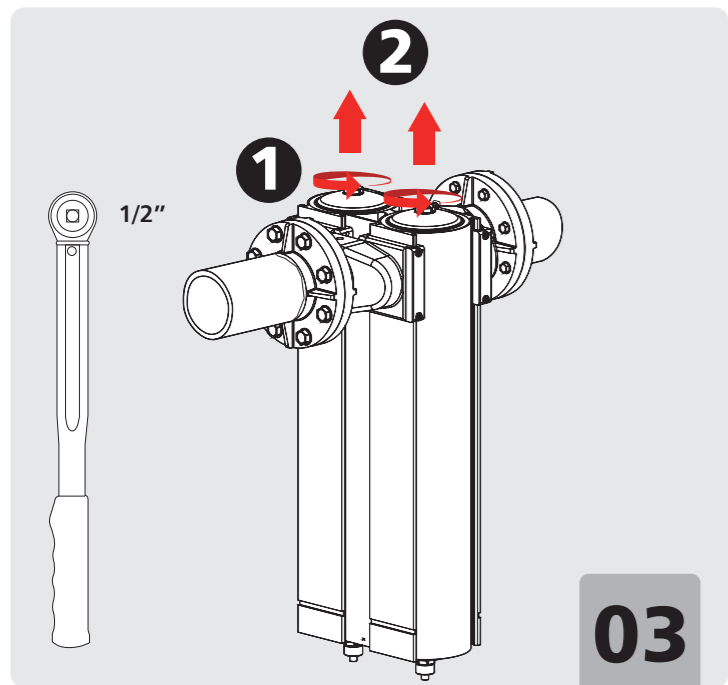
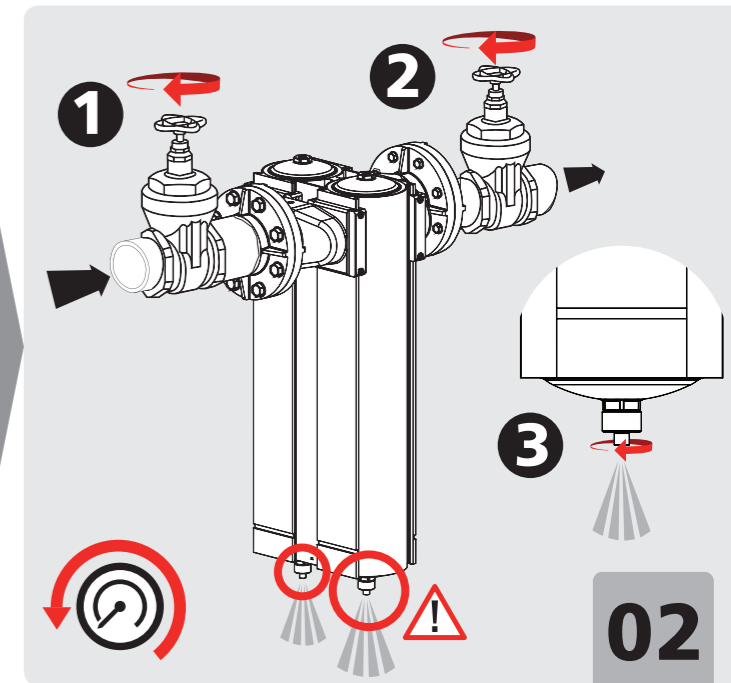
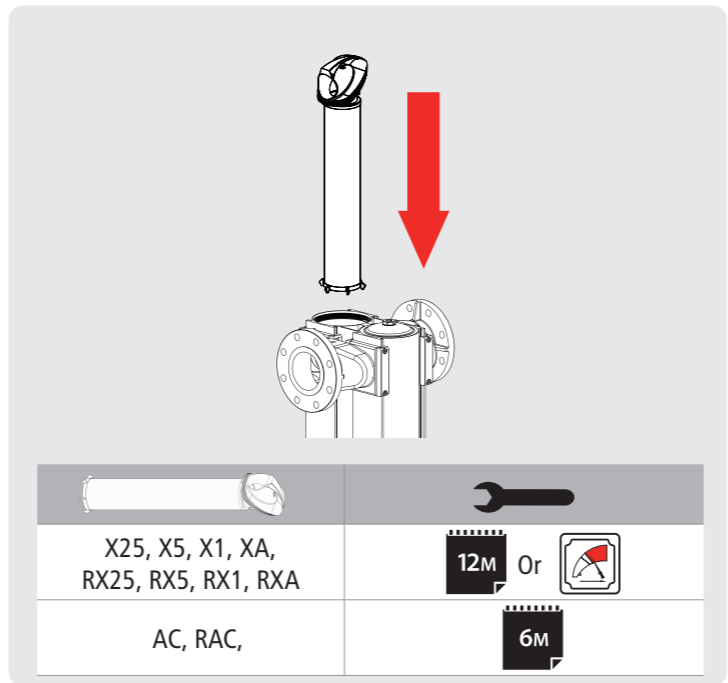
Lloyd's Register Verification Ltd - Notified Body No 0038
71 Fenchurch Street, London EC3M 4BS, England

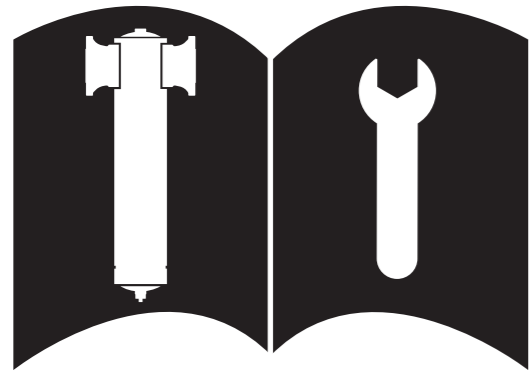
Quality Assurance System: ISO9001 - LRQ0930553
Lloyds Register Quality Assurance Ltd (LRQA)
1 Trinity Park, Bickenhill Lane, Birmingham, B37 7ES, United Kingdom



04 1319 002 01 Rc

www.walkerfiltration.com





04 1319 002 01 Rc
www.walkerfiltration.com

Operating pressure barg (psig)	0.3 (4)	0.6 (9)	1 (14.5)	2 (29)	3 (44)	4 (58)	5 (72)	6 (87)	7 (100)	8 (115)	10 (145)	12 (174)	14 (203)	16 (232)
	7 barg - correction factor	0.21	0.29	0.38	0.53	0.65	0.76	0.84	0.92	1	1.07	1.19	1.31	1.41

EN Installation, maintenance and authorised disposal to be carried out by competent personnel only, in accordance with operating instructions, relevant standards, regulations and legal requirements. **DE** Installation, Wartung und Vernichtung dürfen nur von autorisiertem Fachpersonal und in Übereinstimmung mit der Bedienungsanleitung, den einschlägigen Normen, Vorschriften und gesetzlichen Bestimmungen durchgeführt werden. **FR** L'installation, la maintenance et l'élimination doivent uniquement être effectuées par des personnes qualifiées et autorisées, conformément aux instructions opérationnelles, aux normes pertinentes, aux exigences réglementaires et légales. **IT** Installazione, manutenzione e smaltimento deve occuparsi esclusivamente personale competente e autorizzato, nel rispetto delle istruzioni operative, delle norme pertinenti, dei regolamenti e dei requisiti legali vigenti. **PT** A instalação, a manutenção e a eliminação devem apenas executar-se por pessoal autorizado e competente, em conformidade com as instruções de funcionamento, com as normas e regulamentos relevantes e com os requisitos legais. **EL** Η εγκατάσταση, η συντήρηση και η απορρίψη πρέπει να εκτελείται μόνο από αρμόδιο και εξουσιοδοτημένο προσωπικό, σύμφωνα με τις οδηγίες χρήσης, τα σχετικά πρότυπα, τους συναφείς κανονισμούς και τις νόμιμες απαιτήσεις. **SV** Installation, underhåll och bortskaffande får endast utföras av behörig och auktoriserad personal och ska ske i enlighet med alla driftsvisningar, tillämpliga standarder, förordningar och andra juridiska krav. **NOR** Installasjon, vedlikehold og avhending skal kun utføres av kompetent og autorisert personell i henhold til driftsinstruksjoner, relevante standarder, regelverk og lovmessige krav. **DA** Installation, vedligeholdelse og bortskaffelse må kun udføres af kompetent og autoriseret personale i henhold til betjeningsvejledningen, relevante standarder, bestemmelser og lovmæssige krav. **FI** Asennuksen, huollon ja käytöstä poiston saa suorittaa vain pätevä ja valtuutettu henkilöstö. Näiden toimenpiteiden aikana on noudatettava käyttöohjeita sekä asiaan liittyviä standardreja, määräyksiä ja lakeja. **IS** Uppsetning, viðhald og förgun á eingöngu að vera í höndum starfsfólks sem er hæft og viðurkennt á sínu sviði og á að framkvæma í samræmi við notkunarleiðbeiningar, viðeigandi staðla, reglugerðir og lög. **PL** Instalacja, konserwacja oraz utylizacja może wykonywać wykwalifikowany i uprawniony personel zgodnie z instrukcją użycia, właściwymi przepisami i wymogami prawnymi. **HU** A telepítést, a karbantartást és az ártalmatlanítást kizárólag szakképzett, erre engedélyvel rendelkező személyzet végezheti az üzemeltetési utasításokkal, a vonatkozó szabványokkal, szabályokkal és törvényi előírásokkal összhangban. **RO** Instalarea, întreținerea și debarasarea vor fi efectuate numai de personal competent și autorizat, în concordanță cu instrucțiunile de utilizare, standardele relevante, regulamentele și cerințele legale. **CZ** Instalaci, údržbu a likvidaci směřj provádět pouze kompetentní a autorizovaní pracovníci, v souladu s návodem k použití, příslušnými standardy, pravidly a právními požadavky. **PT-BR** Instalação, manutenção e destruição só podem ser efetuados por indivíduos e autorizados de acordo com instruções operacionais, padrões, regulamentos e exigências jurídicas.

Filter Model	Connection size inches	Inlet flow rate*		Dimensions mm						Weight Kg	No. of elements	Recommended element model
		Nm ³ /hr	SCFM	A	B	C	D	E	F			
XF442F	DN100 / 4"	3058	1800	457	116	650	550	343	N/A	30.8	2	E1142
XF462F	DN100 / 4"	4248	2500	457	116	870	750	343	N/A	37.7	2	E1162
XF472F	DN100 / 4"	5097	3000	457	116	1027	950	343	N/A	42.3	2	E1172
XF400FWS	DN100 / 4"	5097	3000	457	116	650	300	343	N/A	29.3	N/A	N/A

EC Declaration of Conformity (2014/68/EU)
Product Description: Aluminium Filter Housings

Filter Model	PED Category / Conformity Assessment Route		
	CAT SEP	CAT I / Module A	CAT II / Module D1 COV0310124/1
XF442F			✓
XF462F			✓
XF472F			✓
XF400FWS			✓

Assessment based on Group 2 Gas service
Standards Used: ASME VIII Division 1 - Rules for Construction of Pressure Vessels

EC Declaration of Conformity (2014/68/EU) **WALKER FILTRATION**

This declaration of conformity is issued under the sole responsibility of the manufacturer. I declare on behalf of Walker Filtration Ltd (the manufacturer) and as authorised representative, that the stated products fulfil the requirements of the new approach directives.

Name: Simon Wise
Position: Chief Technical Officer (CTO)
Signed: Date: January 2017

Manufactured in the UK by Walker Filtration
www.walkerfiltration.com

Notified body (Not applicable to SEP or Cat I Products)
Lloyd's Register Verification Ltd– Notified Body No 0038
71 Fenchurch Street, London EC3M 4BS. England

Quality Assurance System: ISO9001 – LRQ0930553
Lloyds Register Quality Assurance Ltd (LRQA)
1 Trinity Park, Bickenhill Lane, Birmingham, B37 7ES, United Kingdom